



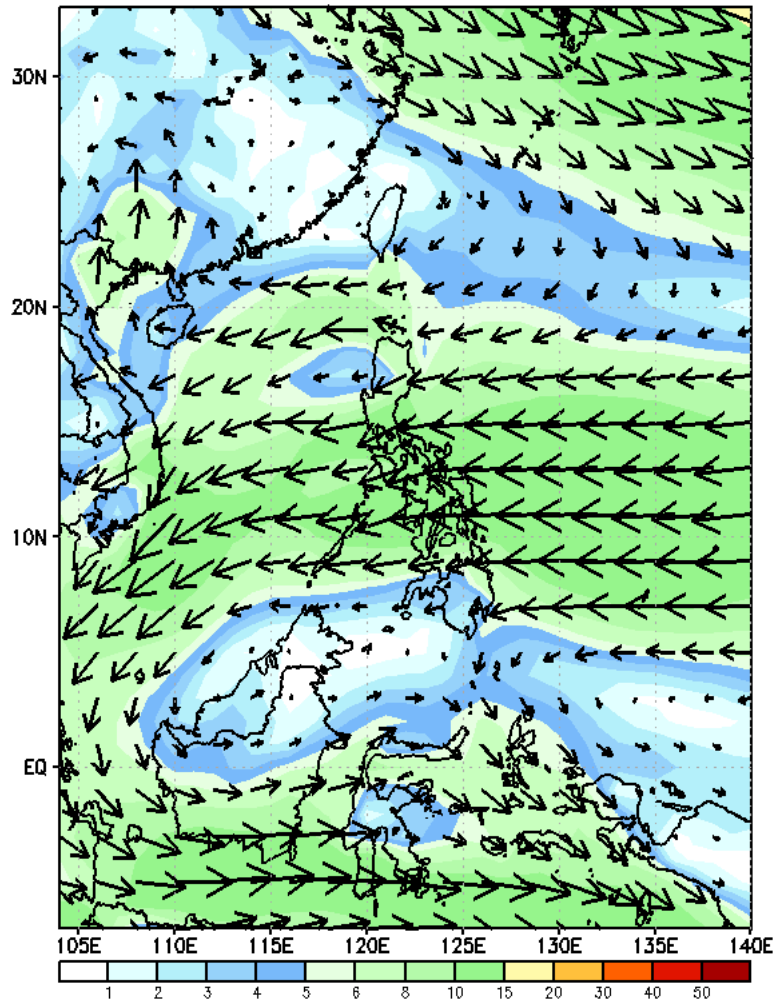
Week 1 & Week 2 Forecast for the Philippines using GEFS Model



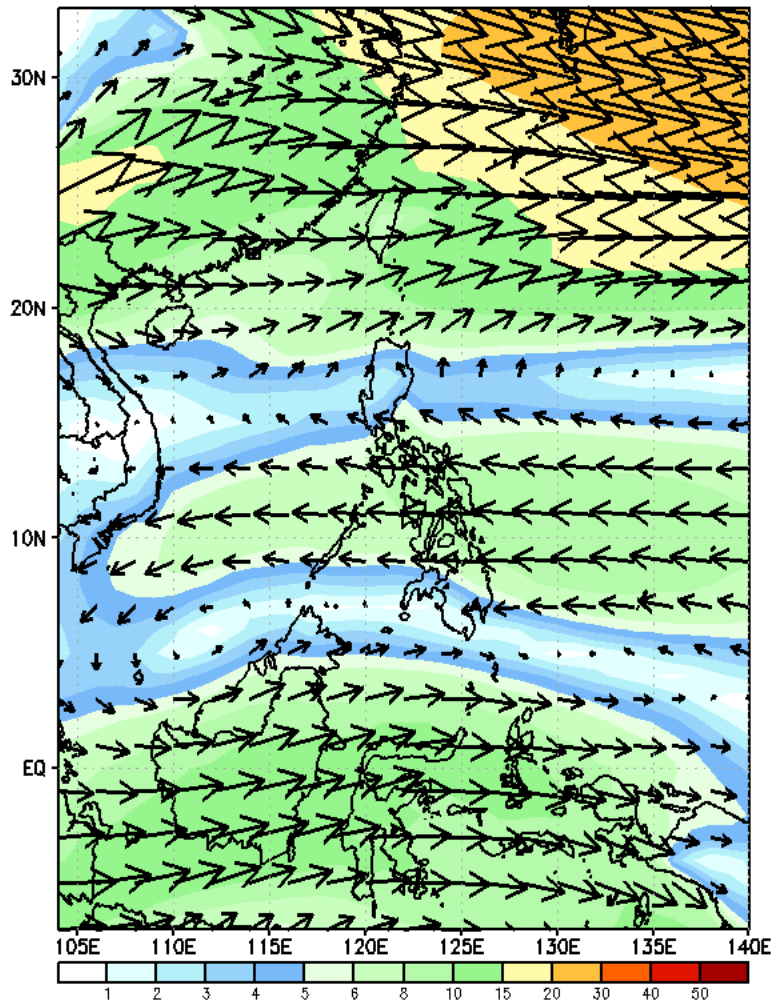
GEFS Week-1 Wind Forecasts:

Week 1: Feb 05-11, 2025

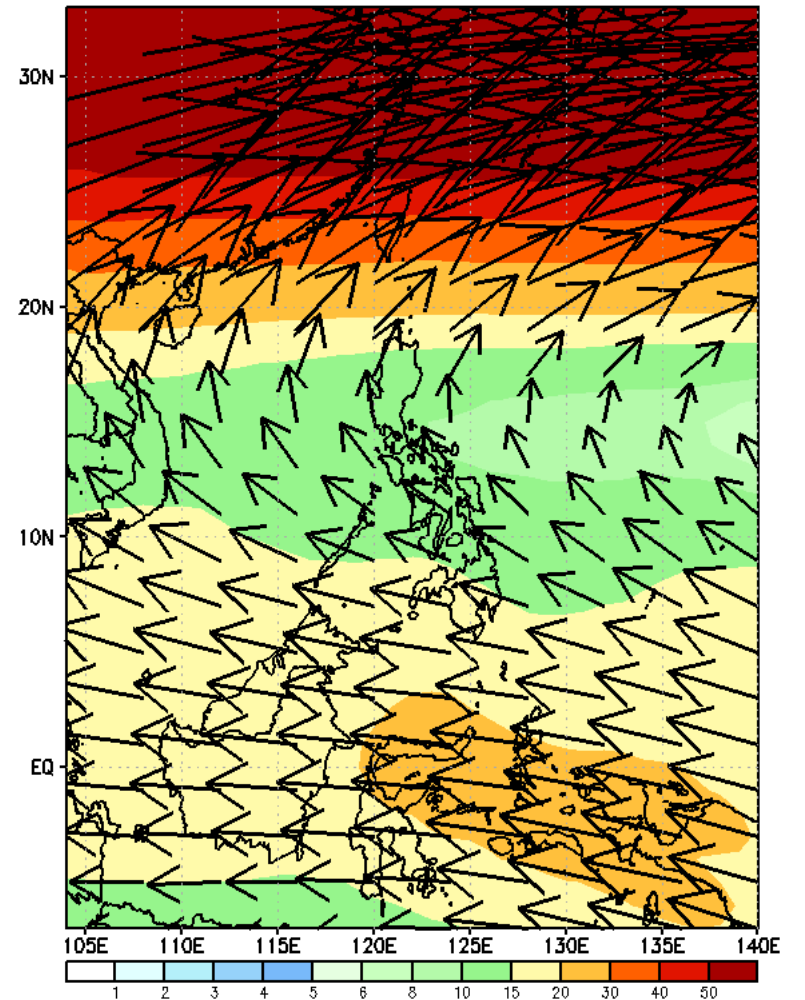
GEFS Week-1 850-hPa Wind Total
Valid: 20250205 - 20250211



GEFS Week-1 700-hPa Wind Total
Valid: 20250205 - 20250211

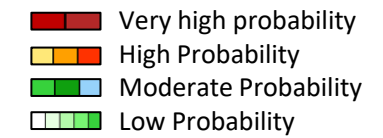


GEFS Week-1 200-hPa Wind Total
Valid: 20250205 - 20250211



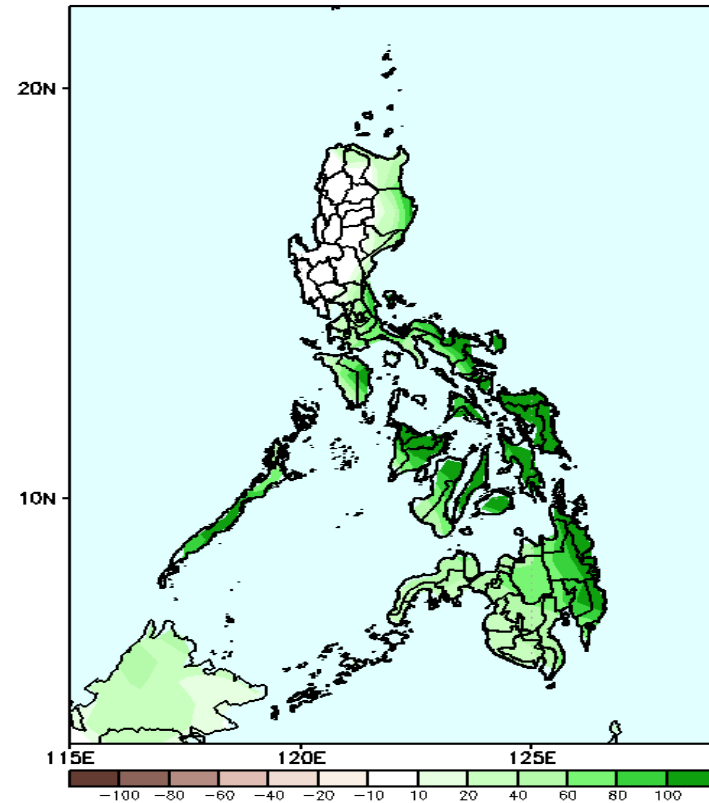
Northeast Monsoon affecting Northern Luzon while Easterlies affecting the rest of the country during the forecast period

Precipitation Anomaly and Exceedance Probability > 25/50 mm



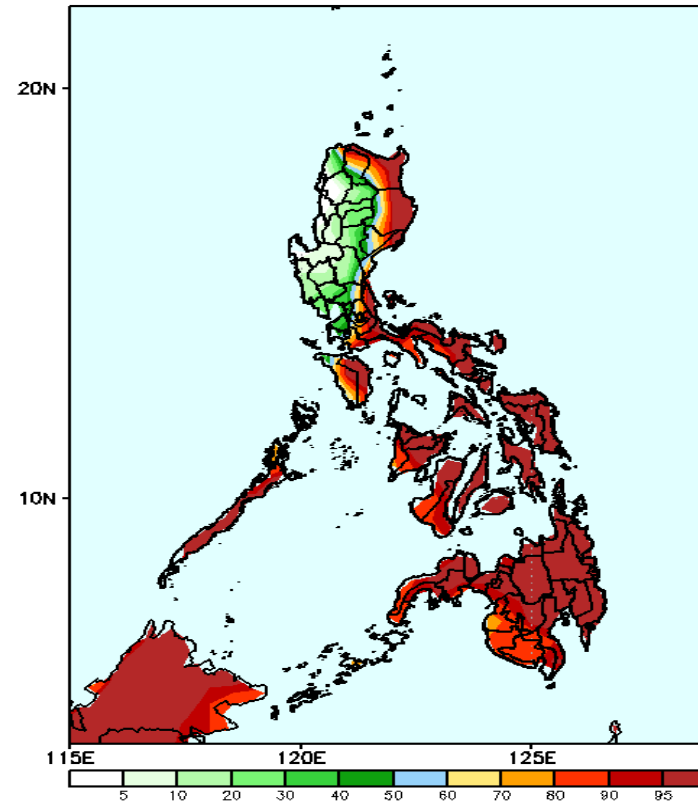
Week 1: Feb 05-11, 2025

GEFS Week-1 Precip Anomaly
Valid: 20250205 - 20250211



Increase of rainfall of 60-100mm is expected over Apayao, Batanes, most of Eastern and Southern Luzon Visayas and Mindanao.

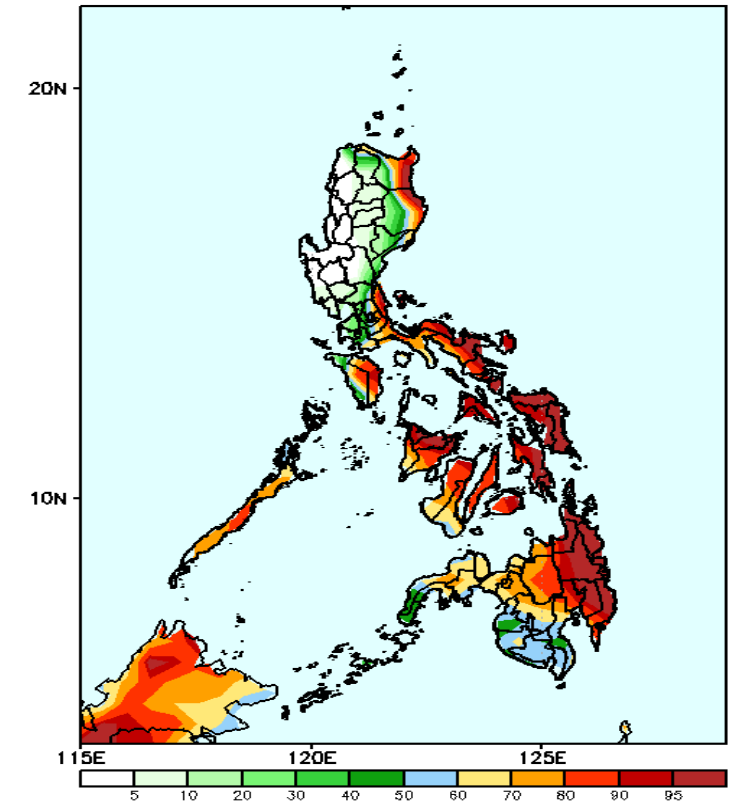
GEFS Week-1 Exceedance Prob. > 25mm
Valid: 20250205 - 20250211



Probability to Exceed 25mm

- High to very high over Batanes, most of Eastern Luzon, Bicol Region, Visayas, and Mindanao;
- Moderate to high over Apayao, northern part of Ilocos Norte and the rest of Southern Luzon;
- Low over the rest of Luzon

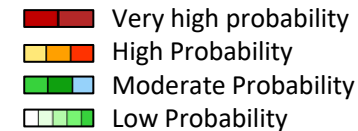
GEFS Week-1 Exceedance Prob. > 50mm
Valid: 20250205 - 20250211



Probability to Exceed 50mm

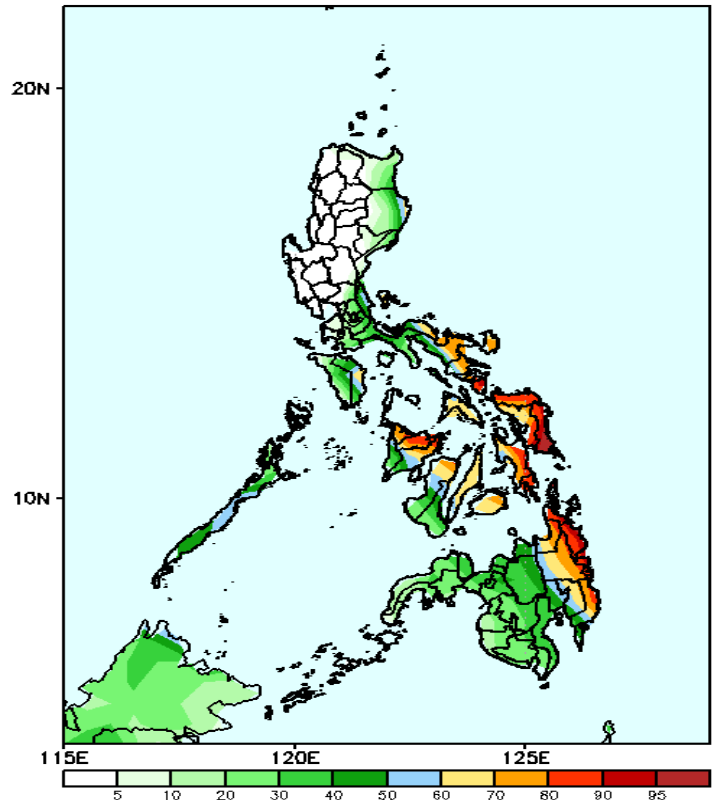
- High to very high over the eastern part of Cagayan and Isabela, Bicol Region, most of Visayas and Eastern Mindanao;
- Moderate to high chance over Batanes, the northern part of Apayao and Aurora, NCR, the rest of Southern Luzon, Negros Island Region, and the rest of Mindanao;
- Low to moderate over the rest of Luzon

Exceedance Probability > 100/150/200 mm



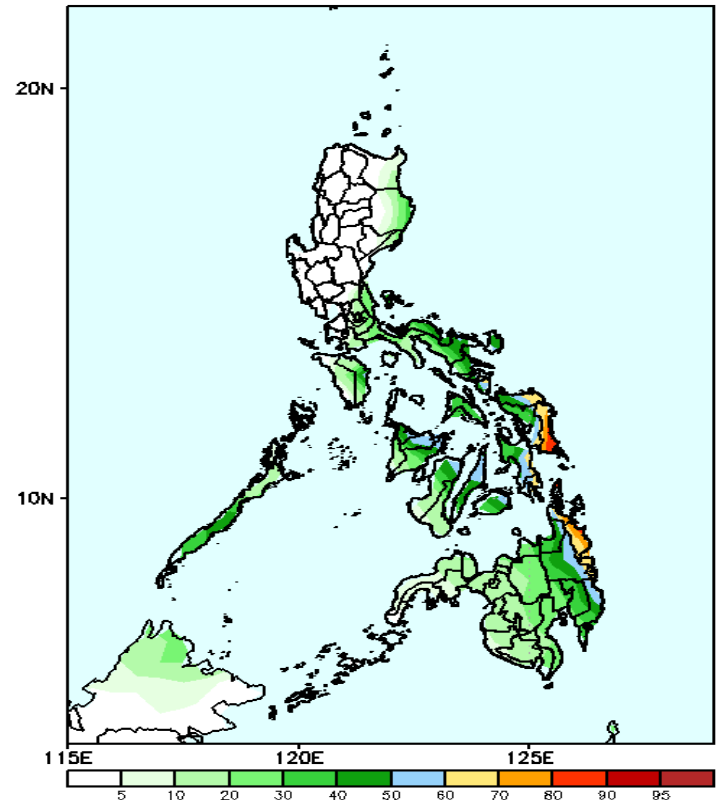
Week 1: Feb 05-11, 2025

GEFS Week-1 Exceedance Prob. > 100mm
Valid: 20250205 - 20250211



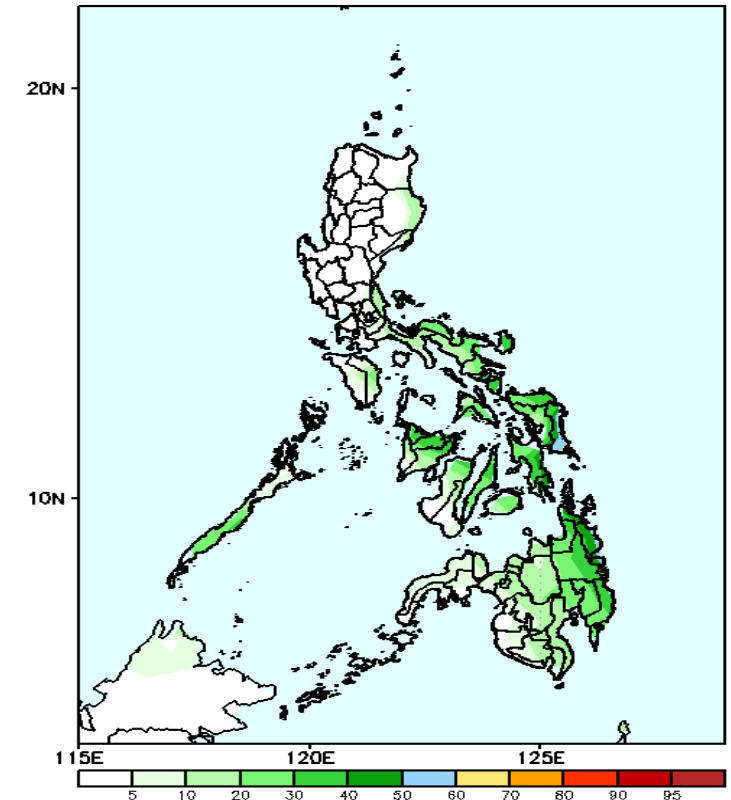
- Probability to Exceed 100mm**
- High to very high over Sorsogon, Samar Provinces, and Surigao Provinces;
 - Moderate to high over the easternmost part of Isabela, Eastern part of Quezon, the rest of Bicol Region, Oriental Mindoro, the rest of Eastern Visayas, Central Visayas, Panay Island, northern part of Negros Occidental, and the rest of Eastern Mindanao;
 - Low to moderate over the rest of Southern Luzon, Visayas,

GEFS Week-1 Exceedance Prob. > 150mm
Valid: 20250205 - 20250211



- Probability to Exceed 150mm**
- Moderate to high over Sorsogon, Eastern Visayas and Eastern Mindanao;
 - Low to moderate over the rest of Southern Luzon, Visayas and Mindanao;
 - Low over the rest of Luzon;

GEFS Week-1 Exceedance Prob. > 200mm
Valid: 20250205 - 20250211

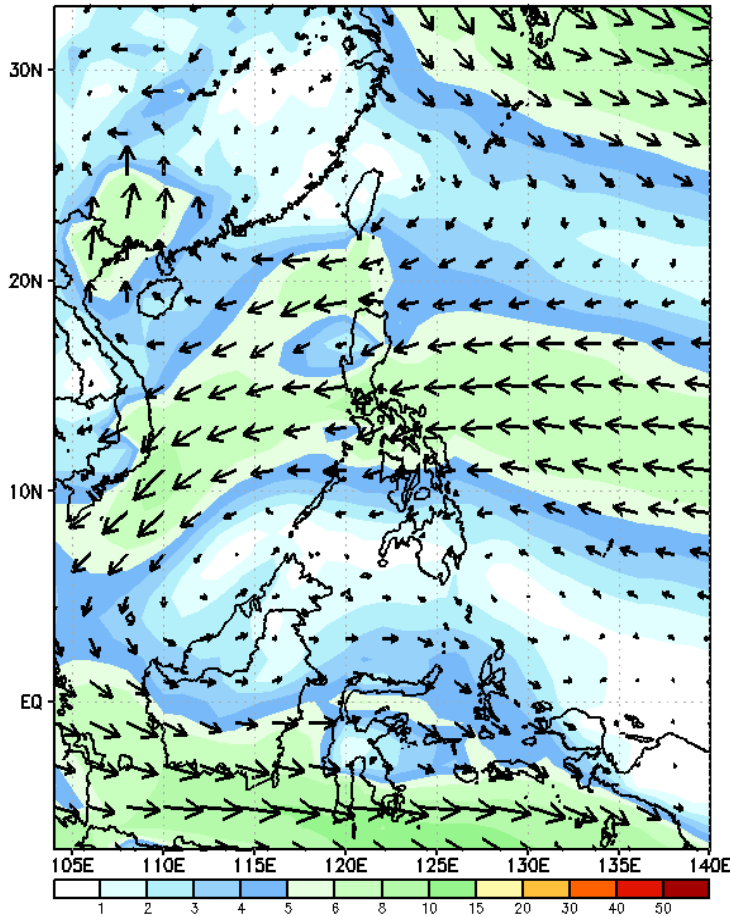


- Probability to Exceed 200mm**
- Low to moderate over Eastern Visayas and Eastern Mindanao;
 - Low over the rest of the country

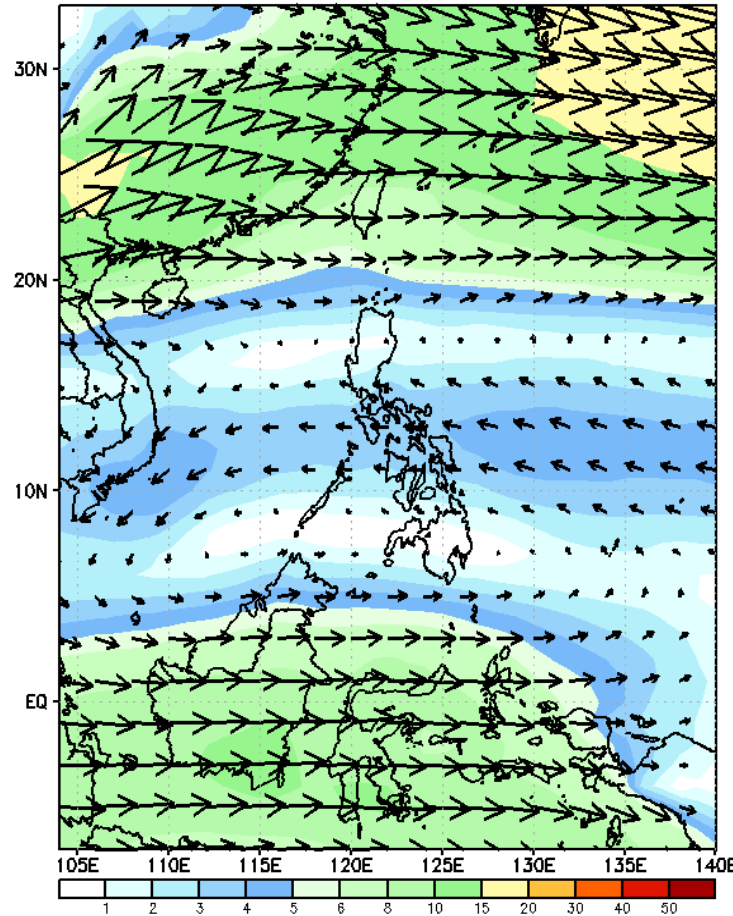
GEFS Week-2 Wind Forecasts:

Week 2: Feb 12-18, 2025

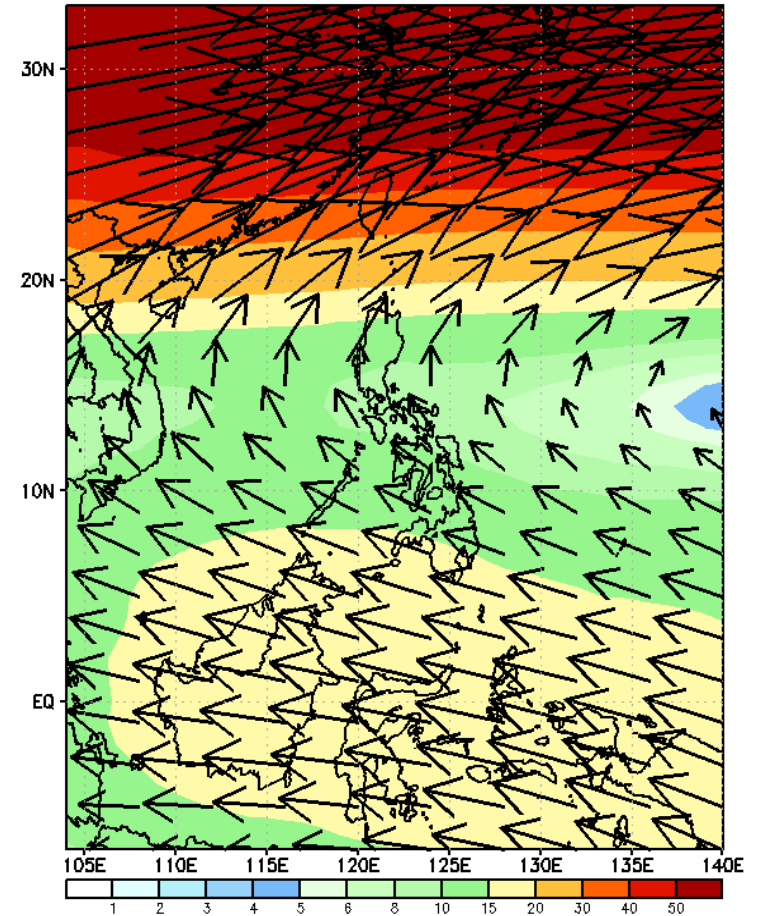
GEFS Week-2 850-hPa Wind Total
Valid: 20250212 - 20250218



GEFS Week-2 700-hPa Wind Total
Valid: 20250212 - 20250218

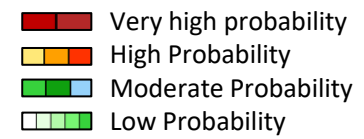


GEFS Week-2 200-hPa Wind Total
Valid: 20250212 - 20250218



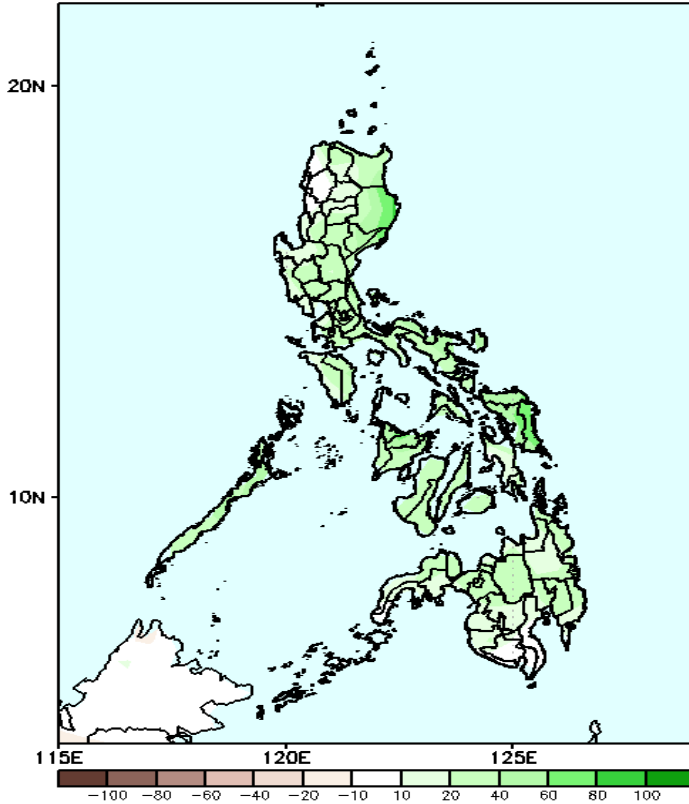
Northeast Monsoon affecting Extreme Northern Luzon while Easterlies affecting the rest of the country during the forecast period

Precipitation Anomaly and Exceedance Probability > 25/50 mm



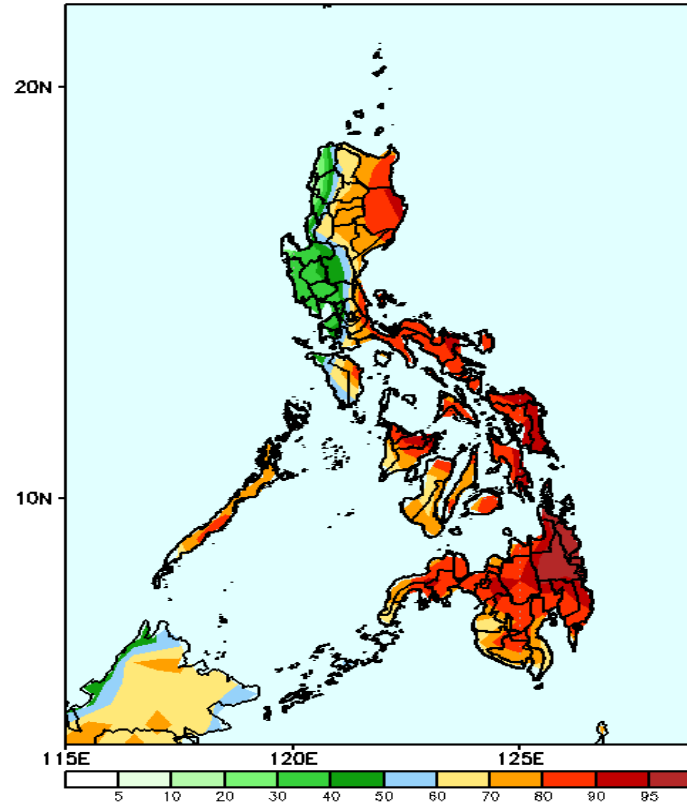
Week 2: Feb 12-18, 2025

GEFS Week-2 Precip Anomaly
Valid: 20250212 - 20250218



Increase of rainfall of 10-40mm is expected in most parts of the country

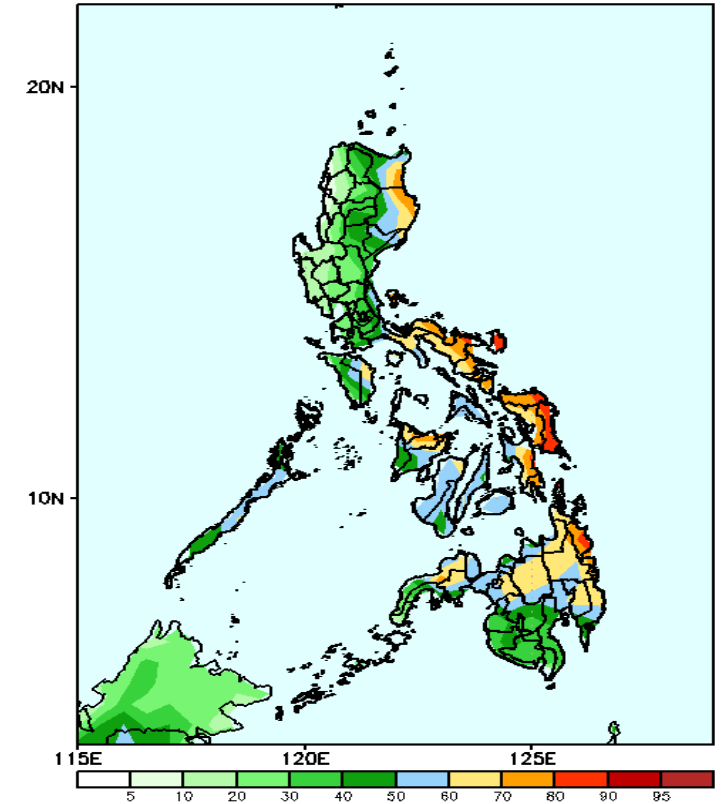
GEFS Week-2 Exceedance Prob. > 25mm
Valid: 20250212 - 20250218



Probability to Exceed 25mm

- High to very high over Eastern Luzon, Visayas and Mindanao;
- Moderate to high over the rest of the country

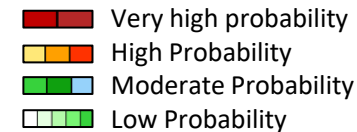
GEFS Week-2 Exceedance Prob. > 50mm
Valid: 20250212 - 20250218



Probability to Exceed 50mm

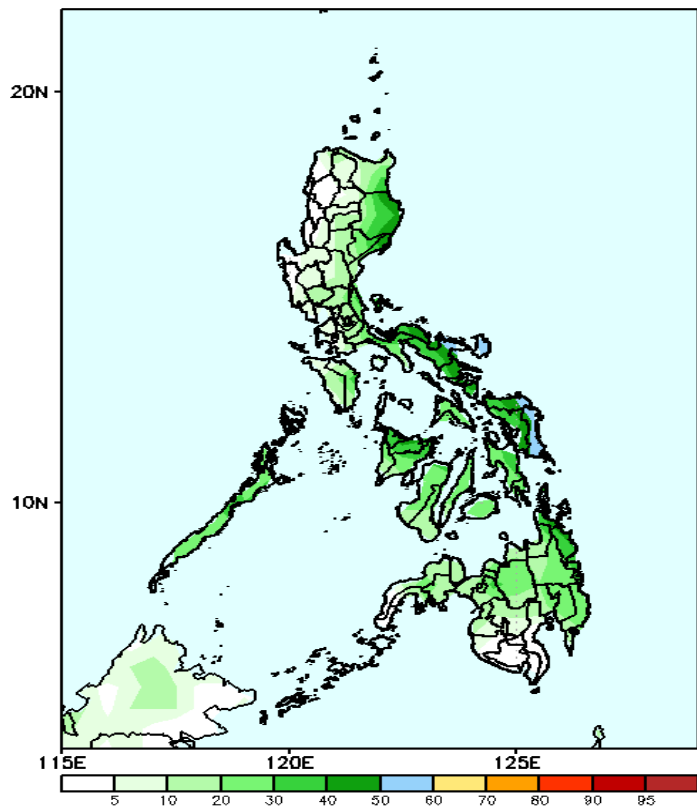
- Moderate to high over Cagayan, Isabela, northern part of Aurora, most of Southern Luzon, Visayas, and Mindanao;
- Low to moderate over the rest of Luzon.

Exceedance Probability > 100/150/200 mm



Week 2: Feb 12-18, 2025

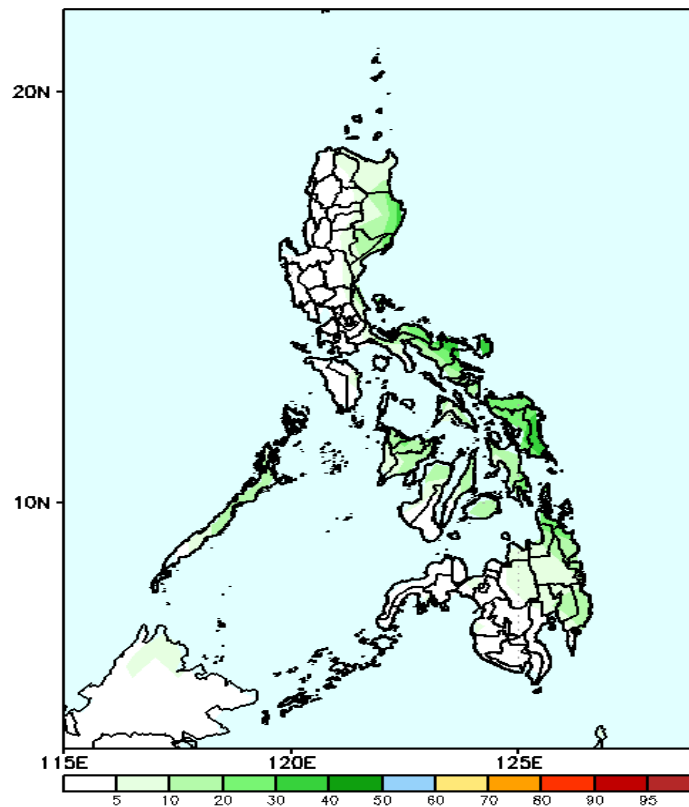
GEFS Week-2 Exceedance Prob. > 100mm
Valid: 20250212 - 20250218



Probability to Exceed 100mm

- Moderate over Bicol Region and Samar Provinces;
- Low to moderate over the rest of the country.

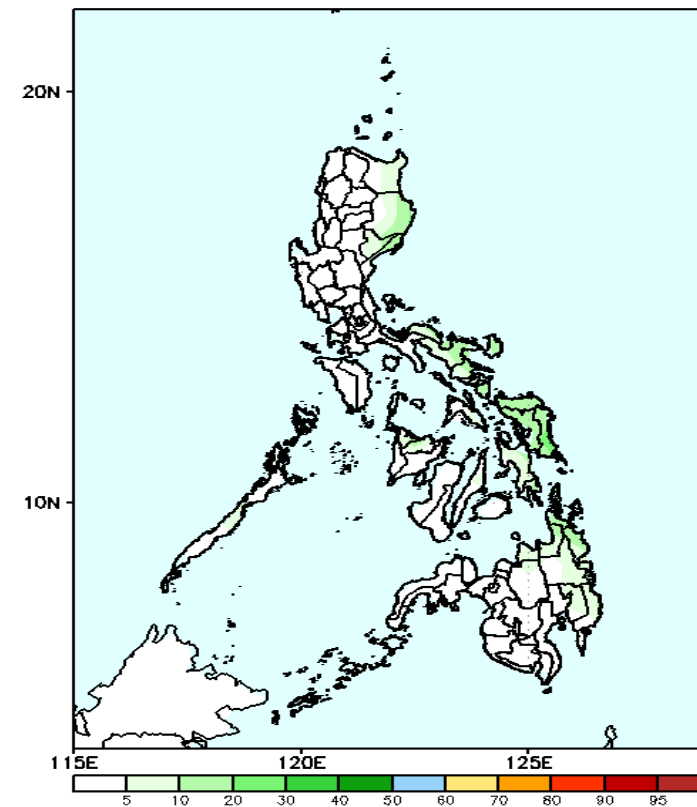
GEFS Week-2 Exceedance Prob. > 150mm
Valid: 20250212 - 20250218



Probability to Exceed 150mm

- Low across the country.

GEFS Week-2 Exceedance Prob. > 200mm
Valid: 20250212 - 20250218

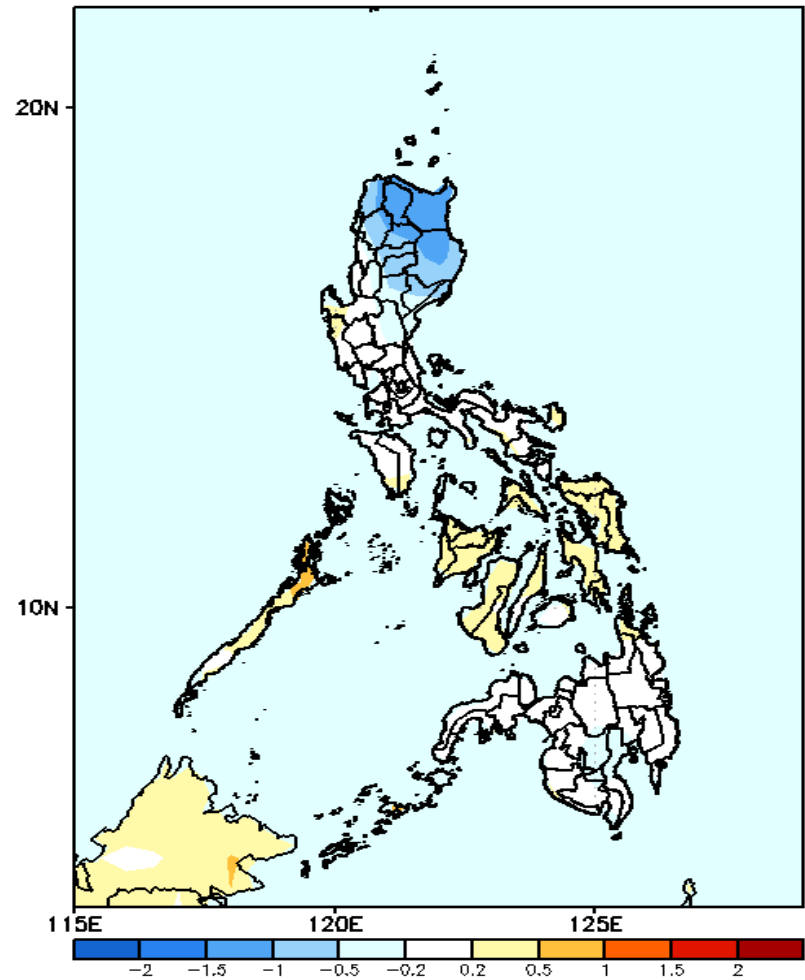


Probability to Exceed 200mm

- Low across the country.

GEFS Week-1 & 2 Forecasts: T2m Anomaly

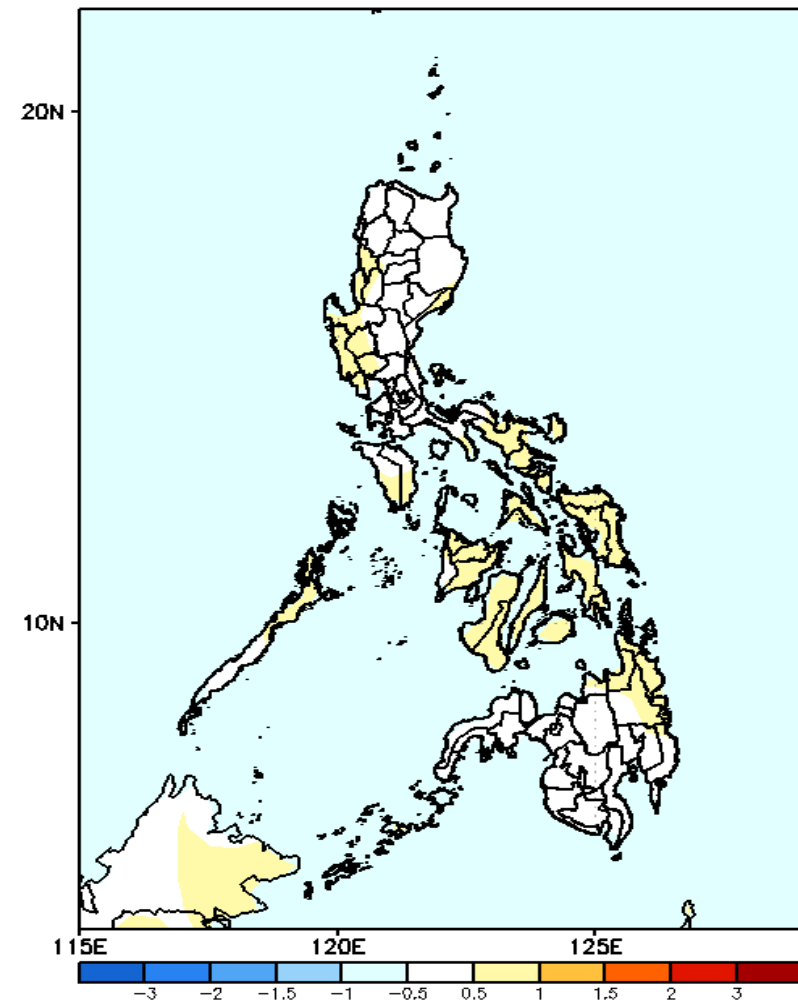
GEFS Week-1 T2m Anomaly
Valid: 20250205 - 20250211



2m Temperature Week 1: Feb 05-11, 2025

Slightly cooler to cooler than average surface air temperature will likely be experienced over Northern Luzon and Nueva Ecija, while near to slightly warmer than average temperature is expected over the rest of the country.

GEFS Week-2 T2m Anomaly
Valid: 20250212 - 20250218



2m Temperature Week 2: Feb 12-18, 2025

Near to slightly warmer than average surface air temperature will likely be experienced in most parts of the country.